

# SBS-resources



**SBS-r Author:** *Rick Butterworth*  
**User Guide Author:** *Paul Brown*



**KINETIC AVIONIC PRODUCTS**  
**INNOVATION FOR AVIATION**

# Index

<b>1.</b>	<b>Introduction</b>	<b>3</b>
<b>2.</b>	<b>Using SBS-resources</b>	<b>3</b>
<b>3.</b>	<b>Overview of SBS-resources</b>	<b>3</b>
<b>4.</b>	<b>Operation of SBS-resources</b>	<b>3</b>
<b>5.</b>	<b>Installation Files</b>	<b>5</b>
<b>6.</b>	<b>Registration</b>	<b>5</b>
<b>7.</b>	<b>Outlines:</b>	<b>6</b>
	<i>Airfields</i>	
	<i>Approach Paths</i>	
	<i>VOR</i>	
<b>8.</b>	<b>Waypoints</b>	<b>9</b>
<b>9.</b>	<b>Operator Flags</b>	<b>10</b>
<b>10.</b>	<b>Country Flags</b>	<b>12</b>
<b>11.</b>	<b>Radio Frequencies</b>	<b>13</b>
<b>12.</b>	<b>Basestation Software and Firmware</b>	<b>13</b>
<b>13.</b>	<b>Aircraft List Configurer</b>	<b>17</b>
<b>14.</b>	<b>Backup Files</b>	<b>17</b>
<b>15.</b>	<b>Restore Backup Files</b>	<b>18</b>
<b>16.</b>	<b>Pop-up Editor (Aircraft Details Window)</b>	<b>20</b>
<b>17.</b>	<b>Websites</b>	<b>29</b>

## **1. Introduction**

Welcome to the updated SBS-resources User Guide, which is here to help you use SBS-resources with ease.

So what is SBS-resources?

SBS-r is a software tool containing 3<sup>rd</sup> party files and programs and some Kinetic enhancements/updates, so that you can get the most of your SBS-1, SBS-1e or SBS-1eR.

SBS-r is updated on a regular basis and included the latest versions of the software/utilities contained within.

## **2. Using SBS-resources**

SBS-resources (referred to as SBS-r) has been developed to aid new and existing users to get the most of Kinetic Avionics SBS-1.

SBS-r provides an easy interface to change the look and functionality of the standard Basestation software package!

SBS-r is designed for use with Version 130 or higher of Basestation and requires one of the following operating systems:

Windows XP SP3, Vista, Windows 7 with MS .NET Framework 2 or higher.

## **3. Overview of SBS-resources**

Once you have installed Basestation, SBS-r has been designed as (almost) a one stop collection of files and applications which through a simple user interface, aids the installation of the files into your PC.

## **4. Operation of SBS-resources**

On starting up SBS-r 6.7 you will be presented a new screen which will give you the ability to locate your Basestation files which will remember where your files are.

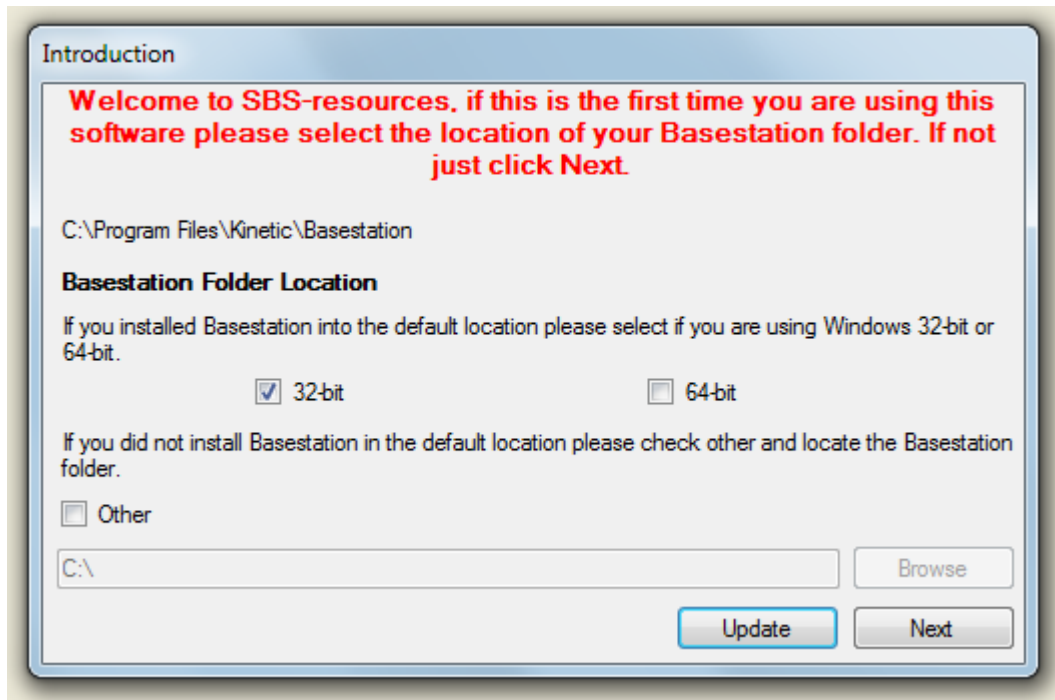


Fig.1

On clicking update, you will go to the main home screen, as illustrated in Fig.2 below.

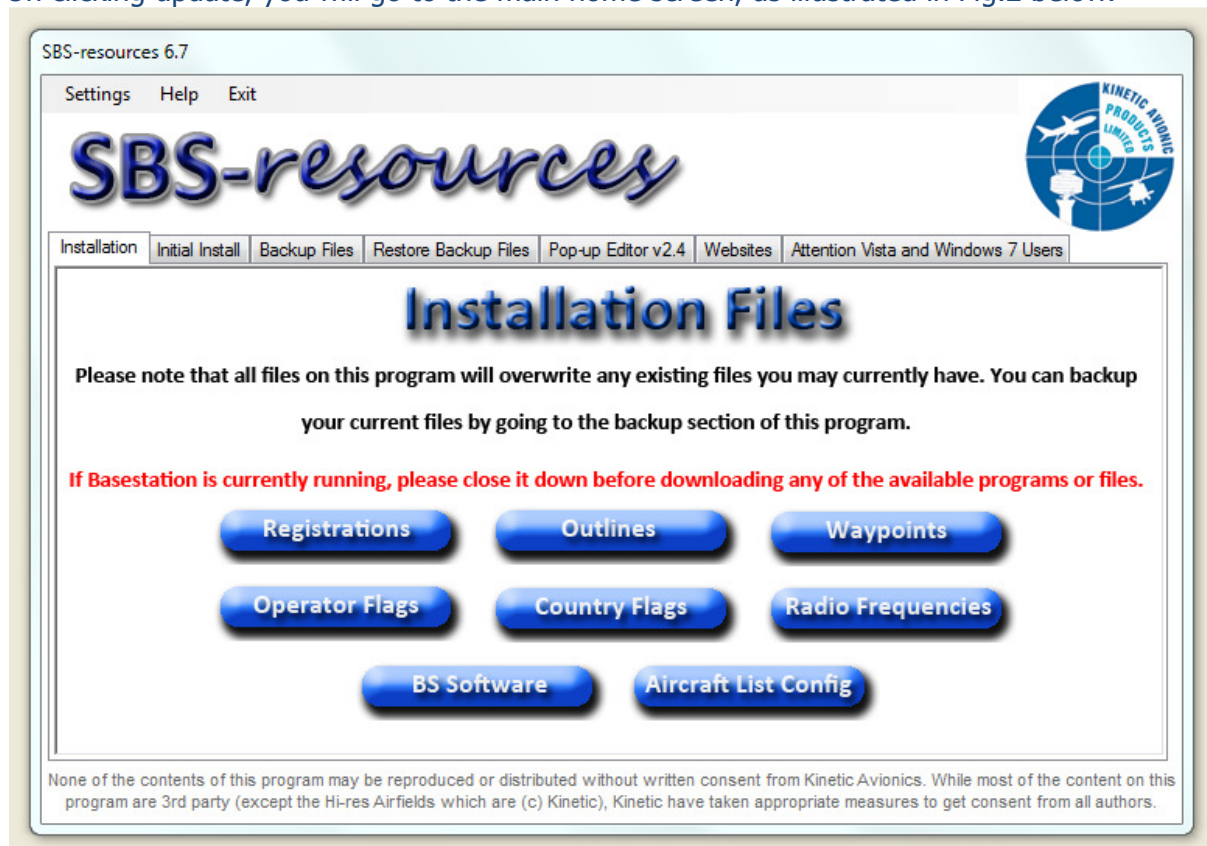


Fig. 2

On this screen you have 6 option tabs: Installation, Backup Files, Restore Backup Files, Pop-up Editor v2.3, Websites and Attention Vista and Windows Users. At the top of the screen is Help (opens up the User Guide) and Exit (closes the application).

We will take each section step by step and will start with the Installation section.  
**Please ensure Basestation is pre-installed but not running when using SBS-r.**

## 5. Installation Files

*You may wish to revert to your existing data after installing the "Installation Files" in which case please refer to the Backup section first.*

In the Installation tab you are presented with 7 options.

The operation of the buttons is as follows:

Registrations, Outlines, Waypoints, Operator Flags, Country Flags, Radio Frequencies, Basestation Software and Aircraft List Configurer.

Let's look at each button individually and start to make changes to your Basestation installation. At this point, if you are an existing Basestation user, SBS-r will overwrite your existing data and it is strongly recommended you go to Section 14, Page 18 to the Backup section of this guide, and secure your existing data, before proceeding. If you are not worried about retaining your data, or are a new SBS owner, let's continue and add some enhancements to your software installation.

## 6. Registrations

On clicking the Registrations button you are greeted with the SQB file (See Fig. 3).

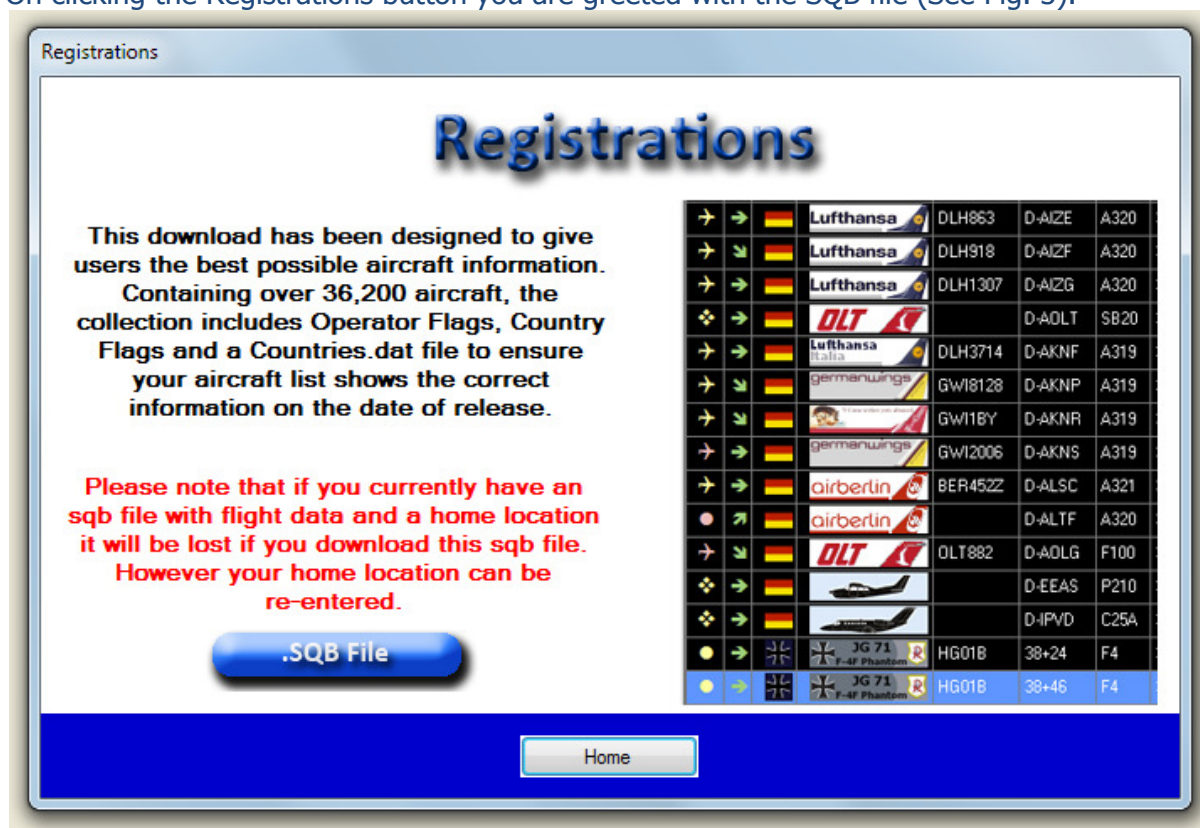


Fig. 3

This SQB file gives you a 36,204 aircraft database, which includes aircraft from all over Europe, Oceania and North America. This includes identified military and civilian aircraft (general aviation as well as commercial) with Iank's silhouette flags used to great effect along with Mustang51's excellent military flags. The military units are identified down to squadron level using the latest unit information from Scramble. This option also installs the countries.dat, flags and sqb to identify a lot of aircraft without the need to have an internet connection, or to speed up the creation of your own database.

On clicking one of the SQB buttons, a final window will open (Fig. 4). If the path displayed is correct, click the OK button and the files will be transferred.

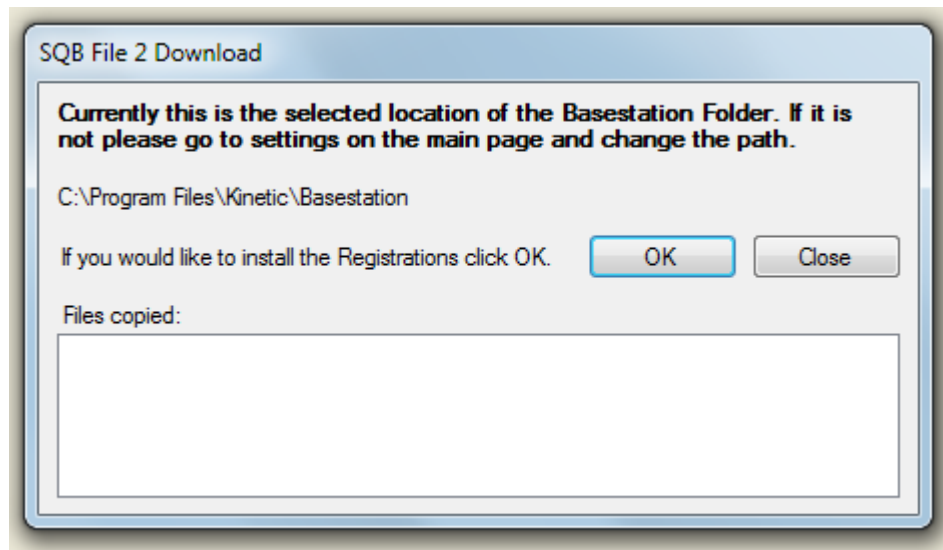


Fig.4

## 7. Outlines

The next option is Outlines. This opens a further page of options:

Airfields, Approach Paths and VORs

We will deal with the Airfields button in depth as it is the same principle for the rest of the options.

### Airfields

The airfields supplied in SBS-r all © Kinetic Avionic Products Ltd and are all unique and not available anywhere else.

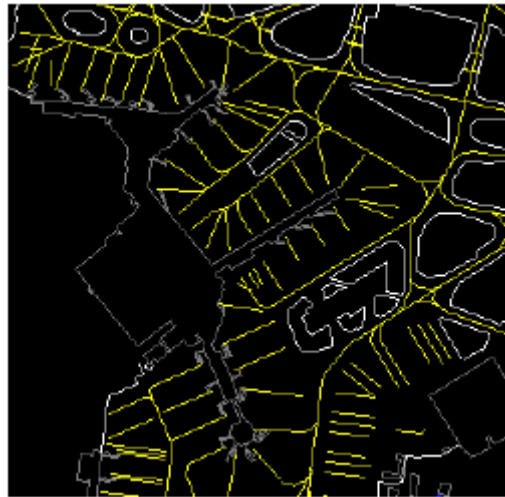


Fig. 5

The new SBS-1e/eR makes taking the hobby into the field (with a suitable mobile laptop) a lot easier, and as a tool for registration spotters, combined with the new outlines, if the aircraft has power on, you can now identify which aircraft is on which gate (bay if you are Australian!). For this reason, Air Stairs, Taxiway centreline markings, Holding points, Parking bay centrelines and runway markings are all added, as are airfield buildings. For those airfields which have ADS-B equipped vehicles – roadways are also included.

**New to 6.6: Baldonnell, Leuchars, Old Buckenham, Heathrow V2.3, Gatwick V1.2 and Biggin Hill**

**The airfields included are as follows:**

<i>Aberdeen</i>	<i>Adelaide</i>	<i>Atlanta</i>	<i>Antwerpe</i>
<i>Belfast City</i>	<i>Berlin-Schoenefeld</i>	<i>Berlin-Tegel</i>	<i>Biggin Hill</i>
<i>Birmingham (V2.0)</i>	<i>Blackbushe</i>	<i>Blackpool</i>	<i>Boscombe</i>
<i>Bordeaux</i>	<i>Bournemouth</i>	<i>Brisbane (V1.1)</i>	<i>Bristol</i>
<i>Brize Norton</i>	<i>Brussels</i>	<i>Cambridge</i>	<i>Cardiff</i>
<i>Cologne</i>	<i>Compton Abbas</i>	<i>Copenhagen</i>	<i>Coventry</i>
<i>Cranfield</i>	<i>Doncaster (V1.1)</i>	<i>Durham</i>	<i>Dusseldorf</i>
<i>Duxford</i>	<i>East Midlands</i>	<i>Edinburgh</i>	<i>Elstree</i>
<i>Exeter</i>	<i>Fairford</i>	<i>Fairoaks</i>	<i>Farnborough</i>
<i>Filton</i>	<i>Frankfurt-Main</i>	<i>Gatwick (V1.2)</i>	<i>Geneva</i>
<i>Glasgow (V2.0)</i>	<i>Gloucestershire</i>	<i>Hamburg</i>	<i>Haneda</i>
<i>Hannover</i>	<i>Hawarden</i>	<i>Heathrow (V2.3)</i>	<i>Kemble</i>
<i>Las Vegas</i>	<i>Lasham</i>	<i>Le Bourget</i>	<i>Leeds/Bradford</i>
<i>Lisbon</i>	<i>Liverpool</i>	<i>London City</i>	<i>Luton</i>
<i>Lyneham</i>	<i>Manchester (V1.1)</i>	<i>Manchester-Barton</i>	<i>Manchester-Woodford</i>
<i>Manston</i>	<i>Melbourne</i>	<i>Mildenhall</i>	<i>Newcastle</i>
<i>Newquay</i>	<i>Norwich</i>	<i>Odiham</i>	<i>Palma</i>
<i>Paris-CDG</i>	<i>Paris-Orly</i>	<i>Plymouth</i>	<i>Prestwick</i>
<i>Redhill</i>	<i>Ronaldsway</i>	<i>Schiphol</i>	<i>Shawbury</i>
<i>Shoreham</i>	<i>Southend</i>	<i>Southampton</i>	<i>Stansted</i>
<i>Sydney</i>	<i>Venice</i>	<i>Warton</i>	<i>Wolverhampton</i>
<i>Woodvale</i>			



The details of airfields in production for future releases of SBS-r, along with other information on these high-resolution outlines are available at:

<http://www.kinetic-avionics.co.uk/forums/viewtopic.php?t=8316&postdays=0&postorder=asc&start=0>

To install these outlines, click on the Airfields button and you will be given the options to save the files (Fig. 6) where you have saved Basestation. Once you are happy you are pointing the files at the correct sub-directory within Basestation, click OK and the selected files will be installed automatically for you.

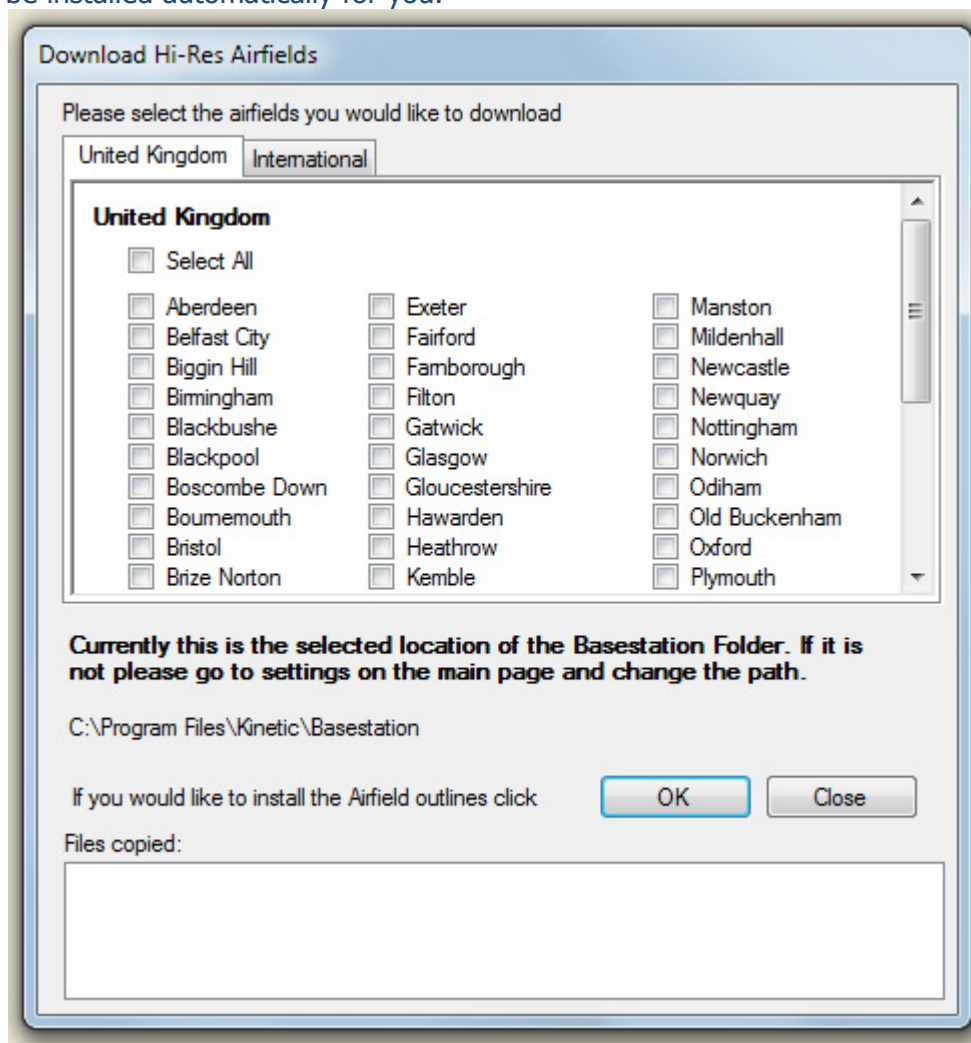


Fig. 6

To get the plans to display properly, you need to tweak the colour settings within Basestation unless you are running Basestation V159, where the colours are set as default. With Basestation running go to:

Setting > Display Settings > Outlines

Taxiways	User 1	=	Deep Red
Taxiways	User 2	=	Pastel Orange
Taxiways	User 3	=	Pastel Blue
Grass Runways/Taxiways	User 4	=	Green
Buildings	User 5	=	Dark Grey
Taxiways/Holds	User 6	=	Yellow



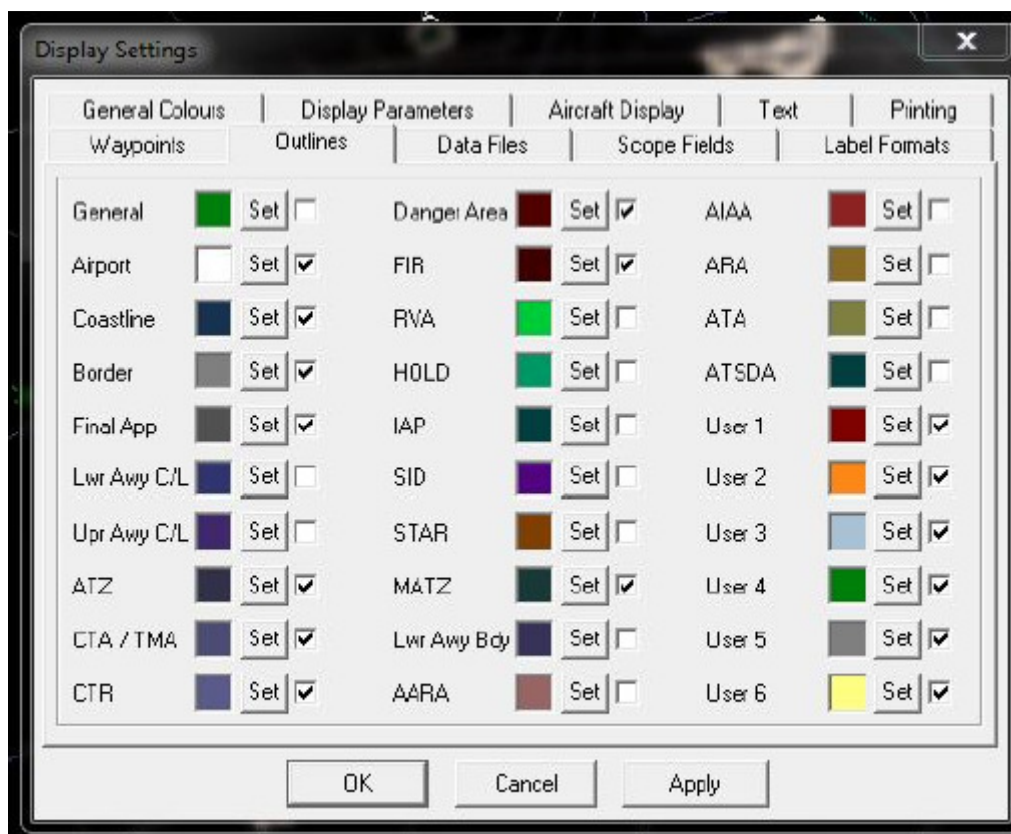


Fig.7

As per Fig. 7, once the colours have been changed, remember to tick the enabled button to the right of the colours so that the colours/outlines come alive!

As far as the installation process goes, the other outlines are installed in an identical manner, and as such, only basic information on the buttons contents is listed below.

## Approach Path

This addition will give you the Final Approach Paths for airfields some of the UK and World Wide.

## VOR

The VOR navigation beacons are included and are displayed as named waypoints onscreen.

## 8. Waypoints

This option allows the installation of Airways and Visual reporting point tags for the UK and Eire along with name tags for Major & Minor airfields as well as Disused airfields. The Installation process is identical to the previous section (outlines). Click on the Waypoints button (Fig. 8) and follow the steps as previously described.

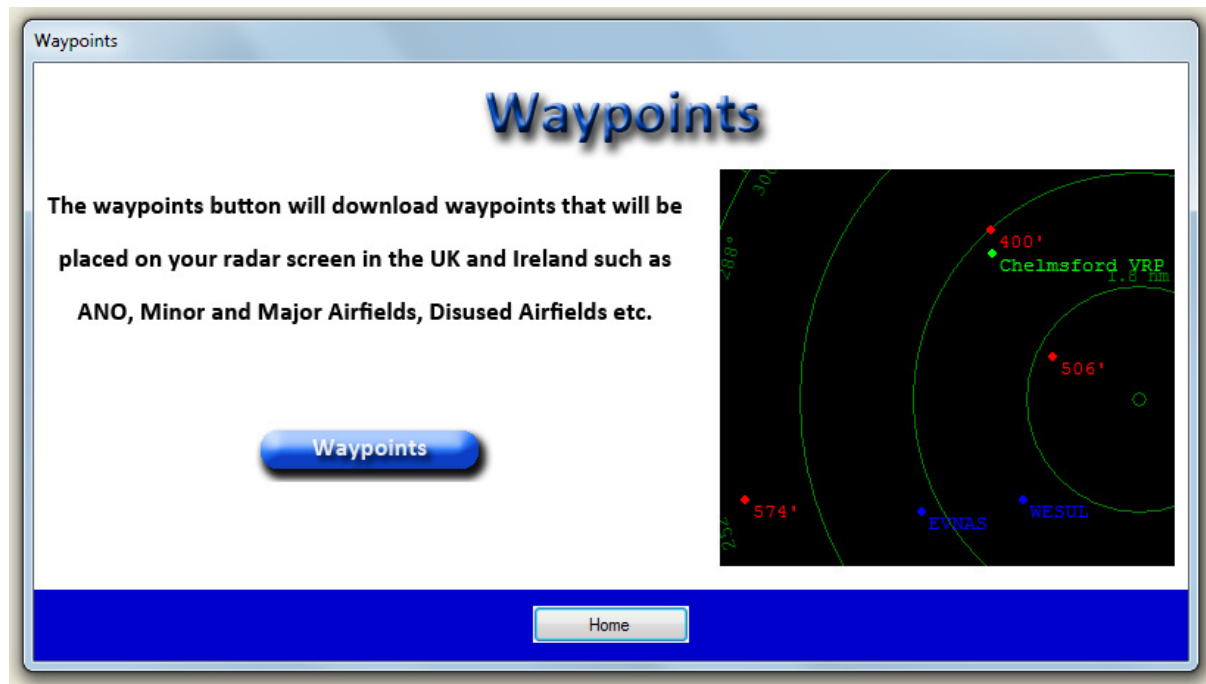


Fig. 8

## 9. Operator Flags

This is the next major update to your screens appearance. Fig. 9 shows an example of some of the options for the Operator Flags column.

	→	UK	easyJet	405638	EZY7045	G-EZDJ	A319	FL290
	→	UK		405923	LNK44B	G-LEAB	C510	FL262
	→	UK	air charter Scotland	405972		G-EDCM	C25A	FL133
	→	UK	easyJet	405867	EZY3CLM	G-EZDN	A319	FL359
	→	UK	flybe.com	405006	BEE270	G-EDUY	DH8D	FL240
	→	UK	flybe.com	40500F		G-EDCW	DH8D	FL100
	→	UK	VES	405F14	GFRNK	G-FRNM	C510	FL117
	→	UK	flybe.com	405EF5	BEE414	G-EDCM	DH8D	FL179
	→	Japan	LTW	430041		ZH885	C301	FL175
	→	Belgium	brussels airlines	449152	BEL3G	OO-DJR	RJ85	FL55
	→	Belgium	brussels airlines	449156	BEL3C	OO-DJ	RJ85	FL52
	→	Netherlands	fly VLM	44098D		OO-VLM	F50	FL126
	→	Denmark	SAS	45AC50		OY-KEP	A319	FL361

Fig. 9



Fig. 10

The options in the Operator Flags section of SBS-r give you quite a few options – and depending what you want, there is virtually something to cover all tastes in here!

Version 1 is a collection of Flags from various sources.

Version 2 is Jack Ford's collection which includes airline fin colours as well as logos.

Version 3 is Peter Forkes' collection of Military Flags.

Version 4 is Paul Moore's collection of Airline fin colours.

Silhouettes are Ian K's collection of aircraft silhouettes.

The 1<sup>st</sup> decision you will need to make is which of versions 1 or 2 Operator Flags you want to install to suit your own personal taste, version 3 and 4 can be add to either version!

Operator flags BMP files are usually named using the airline ICAO identifier. For example, British Airways can be either BAW.bmp, SHT.bmp or CFE.bmp.  
(Search the internet for ICAO 3 letter codes for airlines names)

Both version 1 and 2 flags have identical file names.

Silhouettes is a good option to fill in any blanks with General Aviation or if you prefer to see the aircraft rather than the airline/military unit.

All three downloads are installed using the same procedure as Outlines.

The Edit .ini option should only be attempted after first reading the Bare Bones guide linked to on the Websites tab.

## 10. Country Flags

The SBS-1/1e/1er is shipped with a data file which includes the basic ICAO country designators to the country in which the aircraft is registered. Fig. 9 shows examples of the small flags option in operation.

Fig. 11 shows the options for installing Small Flags. For either option – the modified Countries.dat file is required. The 1st step is to install the .DAT file which is installed in the same way as other files.

Next comes the choice of Countries Set of flags. The choice is to either replace the default country flags with the enhanced flags or to display the ICAO country identifier instead – e.g. 'G-' for the UK etc.

The files are installed as per the Outlines procedure.

Next, the choice of the light or dark background for the Military Set.

Depending what colour you decide to have your main screen, there is a choice of flag background colours. But if the countries.dat file has been installed you MUST install one of the Military Set's, otherwise you will have gaps in your displayed data.



Fig.11

Fig. 12 gives the options for larger flags. The same principles apply as to the small flag set – just on a larger scale!



Fig.12

## 11. Radio Frequencies

This option is used if you have the optional Radio interface option unlocked on your SBS or you own the SBS-1eR. This gives the current known Approach/Radar & Tower frequencies for the UK. Overseas lists are in production and will be added here once completed.

## 12. Basestation Software & Firmware

An innovation in SBS-r is the easy to follow install system for both firmware and software. To check which version of both firmware and software you have, within Basestation, go to 'Help', then 'About Basestation'. This will tell you which versions you have on your system.

On selecting the 'BS Software' button (Fig. 1) within SBS-r, you will be presented with the following screen (Fig. 13).





Fig. 13

Depending on which version of SBS you own, click on the appropriate mode (this is important so that you do not install the wrong version of firmware). If unsure, compare the above images with your box and then click the appropriate model button underneath the images.

For the purposes of this tutorial, we will use the SBS-1 button as an example.

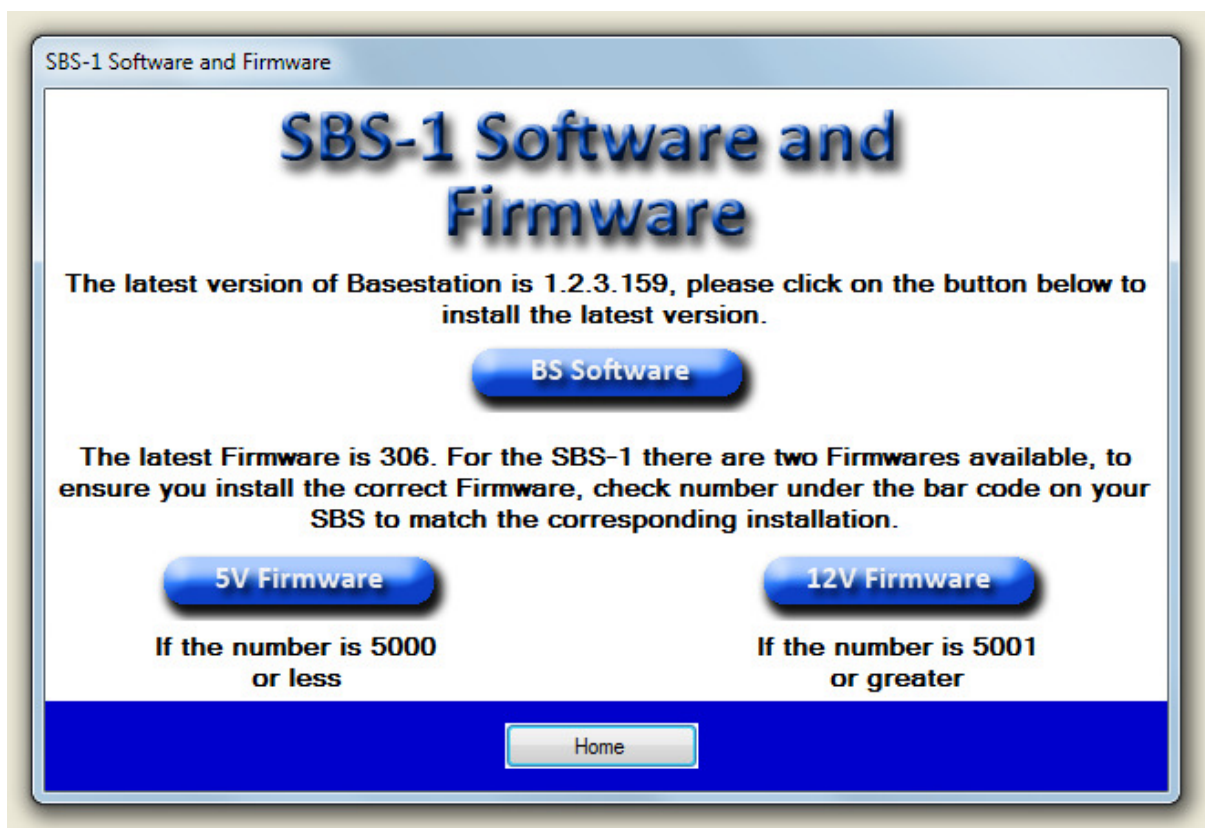


Fig. 14

Fig. 14 shows the main installation screen. If you only need to update Basestation, make sure Basestation is not running, and click the BS Software button.

You will be presented with a window informing you about User Account Control (UAC) if you are a Vista or Windows 7 user (Fig. 15).

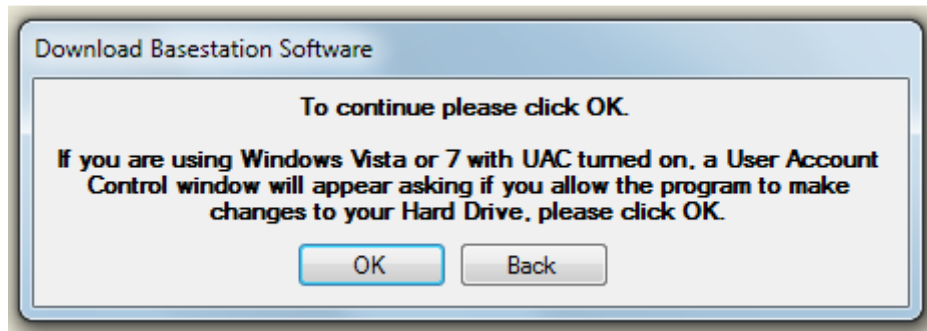


Fig. 15

The latest version of Basestation will be installed in a similar manner to other files that are installed with SBS-r. Fig. 16 shows the download screen and location of the installation.

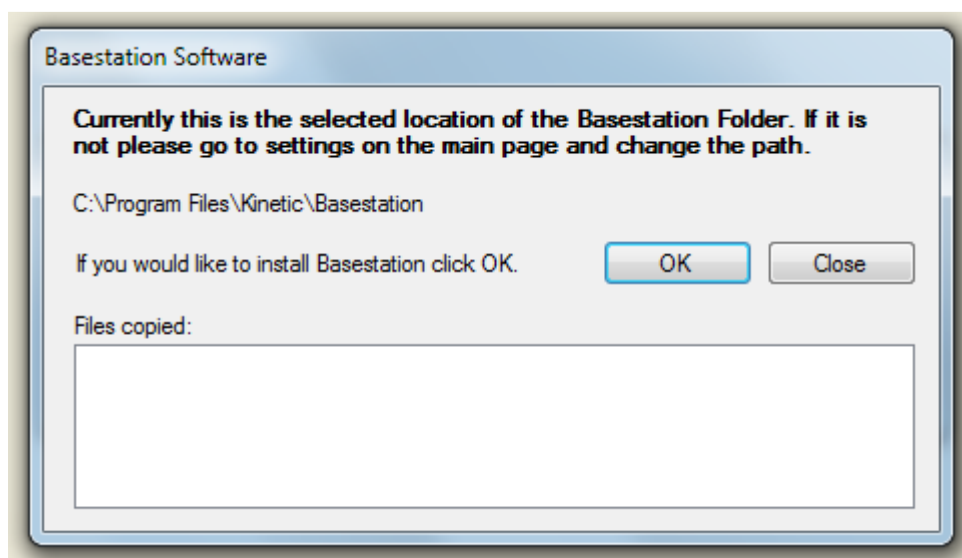


Fig. 16

The firmware option is slightly different. With the SBS-1 you have 2 different versions of firmware installation depending on the voltage of your unit. (Please note this step does not apply to commercially purchased units.)

If the serial number of your SBS-1 is between 1-5000 you need to select the 5v Firmware option. If your serial number of your SBS-1 5001 and above, select the 12v Firmware option.

To flash the firmware within your SBS, you need to ensure your box is connected with a USB and that if using a laptop, ensure you are on mains power so the upgrade does not stop part way through. Unplug any antenna and you are now ready to flash the firmware. And finally make sure Basestation is closed down.

On clicking on the firmware button you will be presented with Fig.17 which acts to confirm/warm that you have completed the previous steps mentioned.



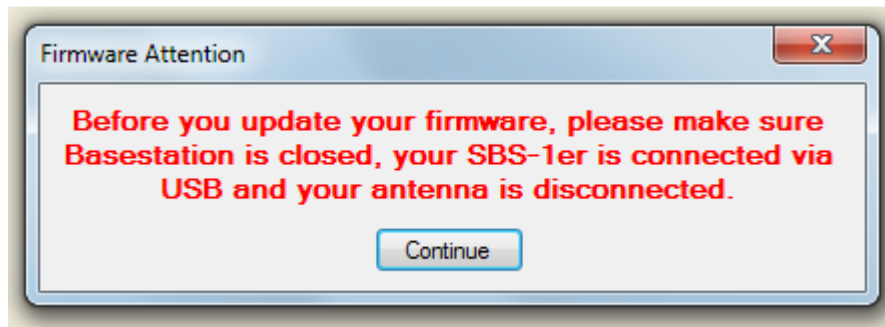


Fig. 17

Fig. 18 shows the final warning screen before SBS-r upgrades your firmware.

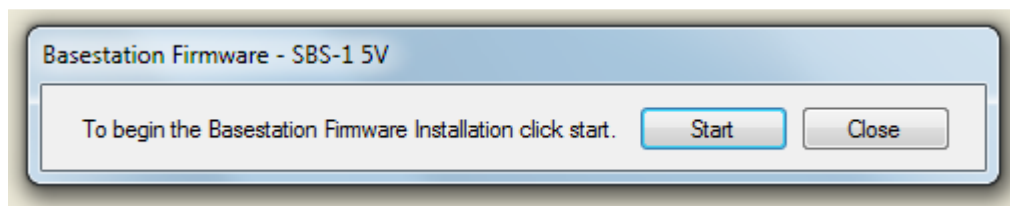


Fig. 18

Fig. 19 shows an example of the SBS-1e (the SBS-1eR is similar) installation screen. The main change between the previous setup is there is only one version of firmware installer so it makes upgrading a little easier.



Fig. 19

### 13. Aircraft List Configurer

Aircraft List Configurer allows you to change the aircraft list order to whatever you want with ease. The software also offers extra columns that are not included in the Aircraft List Default.

The installation of Aircraft List Configurer is very simple. When you reach Fig. 20, just follow the on screen instructions within Aircraft List Configurer.

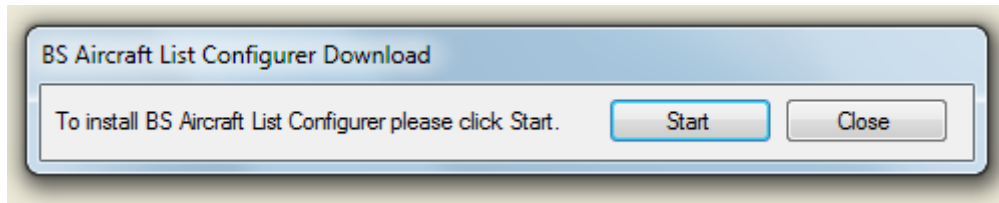


Fig. 20

### 14. Backup Files

This option is used both to keep a secure backup of your data so that your hard work does not go to waste and if you are an existing SBS user, this is important if you do not want to lose the data you have already amassed. Fig. 21 shows the backup screen in SBS-r and is the main tool for backing up your data.



Fig.21

Fig. 22 shows a sample screen identical for all 7 options to back up your data – each one needs to be set up individually and the operation is the same for each one.

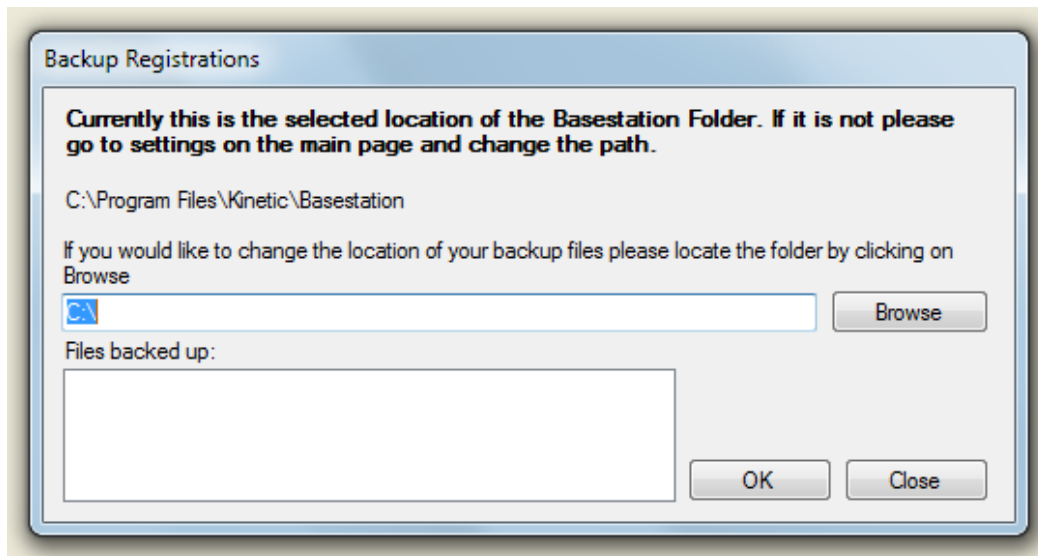


Fig. 22

Remember that you need to set the location you want to back up the data too!

Once this has been done, click the OK button and your data will be backed up.

## 15. Restore Backup Files

The Restore Backup Files allows a user to move there backup files back into Basestation. Like the Backup Files section it contains all 7 options (see Fig. 23), the only difference is the actual location window, which works the opposite way around to the Backup file location window (see. Fig. 24).



Fig. 23

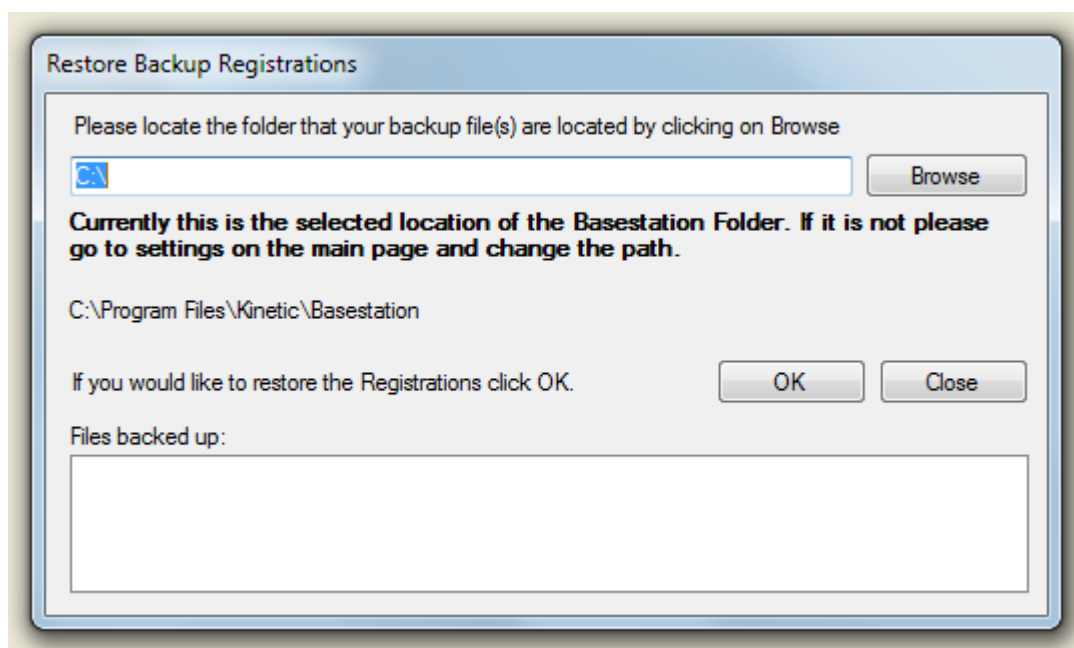


Fig. 24

## 16. Pop-up Editor

The Pop-up window editor is designed to make customizing the aircraft details pop-up window an easy task rather than a major chore!



Fig. 25

Fig. 25 shows the 2 menu options you are now greeted with.

Before you start editing your XSL/CSS files, it is recommended that you backup your data as per section 14 of this manual.

On starting the Details & Layout of the Pop-up Editor you will be presented with Fig. 26

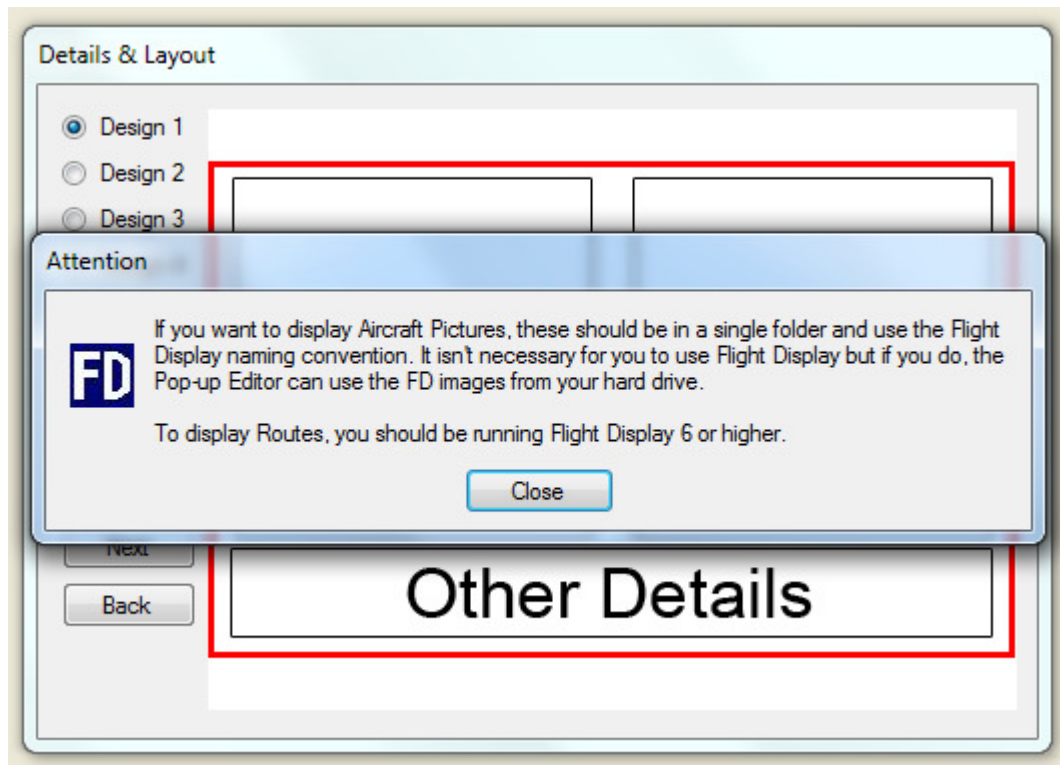


Fig. 26

To get the most out of the tweaks in this section, Flight Display 6 or higher needs to be installed to get the most out of the various options.

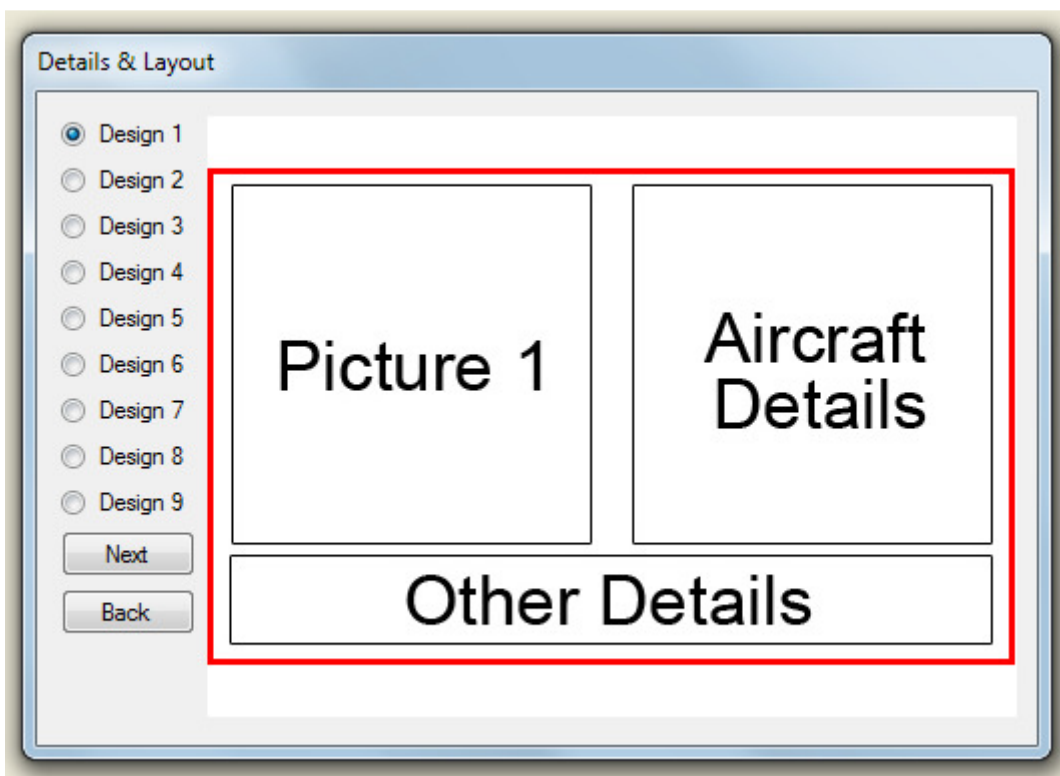


Fig. 27



Clicking on any of the 9 design options will give you a wide variety of choices to the look and feel of your modified aircraft display window.

Fig. 27 shows the selection of Design 1 and the options you can view once the design is finished.

Click on the 'Next' button and you will be presented with Fig. 28.

Fig. 28

There are 6 sections to work through in the design window.

Aircraft Details, Other Details, Colours, Pictures & Headings, Web Links, Weather Charts.

Aircraft Details gives you the option to select which bits of information is displayed on screen, and the option to change the text in the window too i.e. Callsign can become c/s etc. Just click the box by the side of the box you want displayed, and then move to the next section.

If you are using Gatwick Aviation Societies, Active Display software (AD), select the boxes for the data you want to display when used in conjunction with AD.

To finish the options on this page, select the location of the UserData folder and then hit the process button. This will automatically update your xsl file.



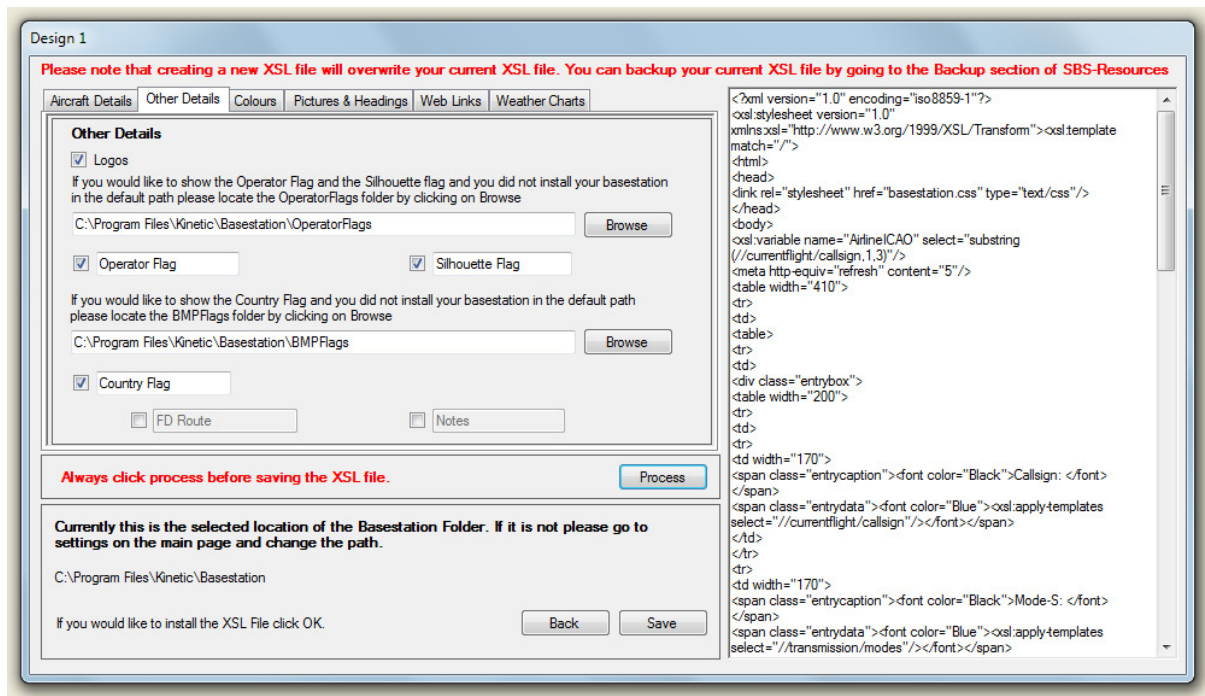


Fig. 29

Next is the 'Other Details' (Fig. 29) option. Select the options you would like displayed in your Pop-up Window. The Operator flag option, will bring up the logo for the airline operating the flight. For example, the callsign might be a Lufthansa, but the aircraft is owned by Easyjet.

The silhouette option will bring up a copy of Ian K's excellent graphics, so regardless of the other data available, as long as the data file is populated, the outline of the aircraft will be displayed.

When this set options has been selected, point the file location box to the point on your hard drive disk where the OperatorFlags folder is located.

If you would like the flag and military roundel for the aircraft you are interested in displayed, this is now possible by selecting the Country Flag box and point the file box to the BMPFlags folder. As with the previous step, click the process button, and move onto the next tab.

If you have Flight Display installed, check the FD Route button and the aircrafts route will be looked up and displayed in the pop-up window. And finally for this page, if you want any notes you have made displayed for aircraft, check the Notes button.

As with the previous stage, click the process button and then choose the 'Colours' tab....

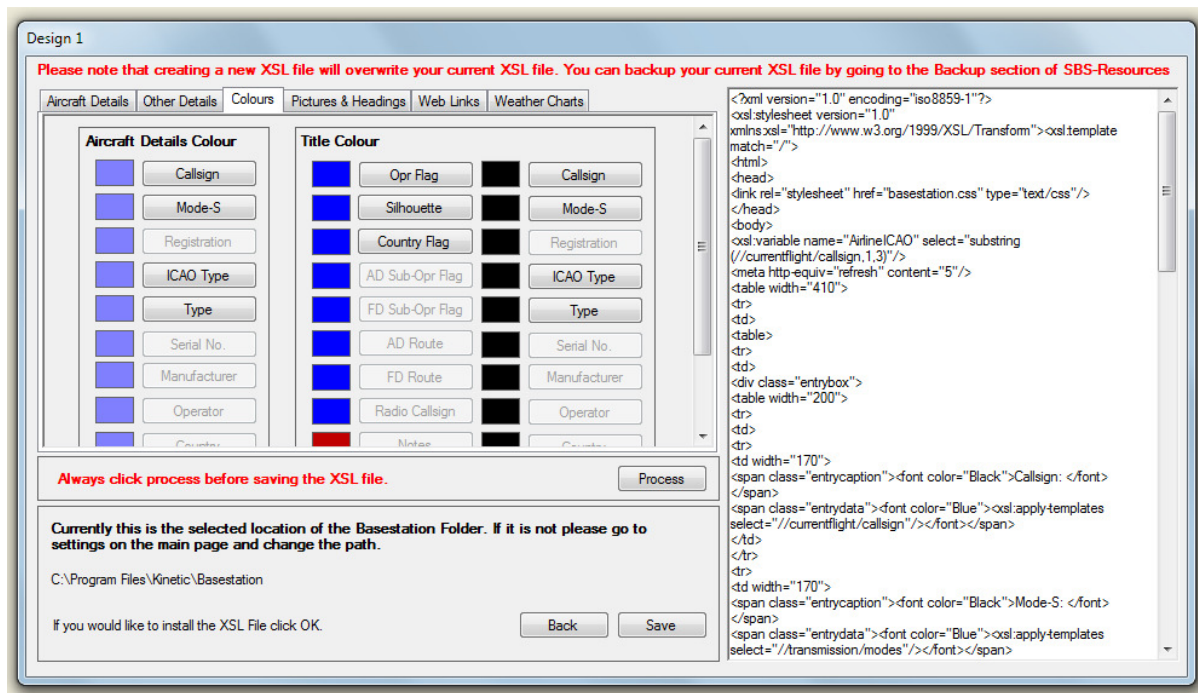


Fig. 30

Fig. 30 shows the colours options for text in pop-up window, select colours required and when finished, click the process button and continue onto the Pictures & Headings tab.

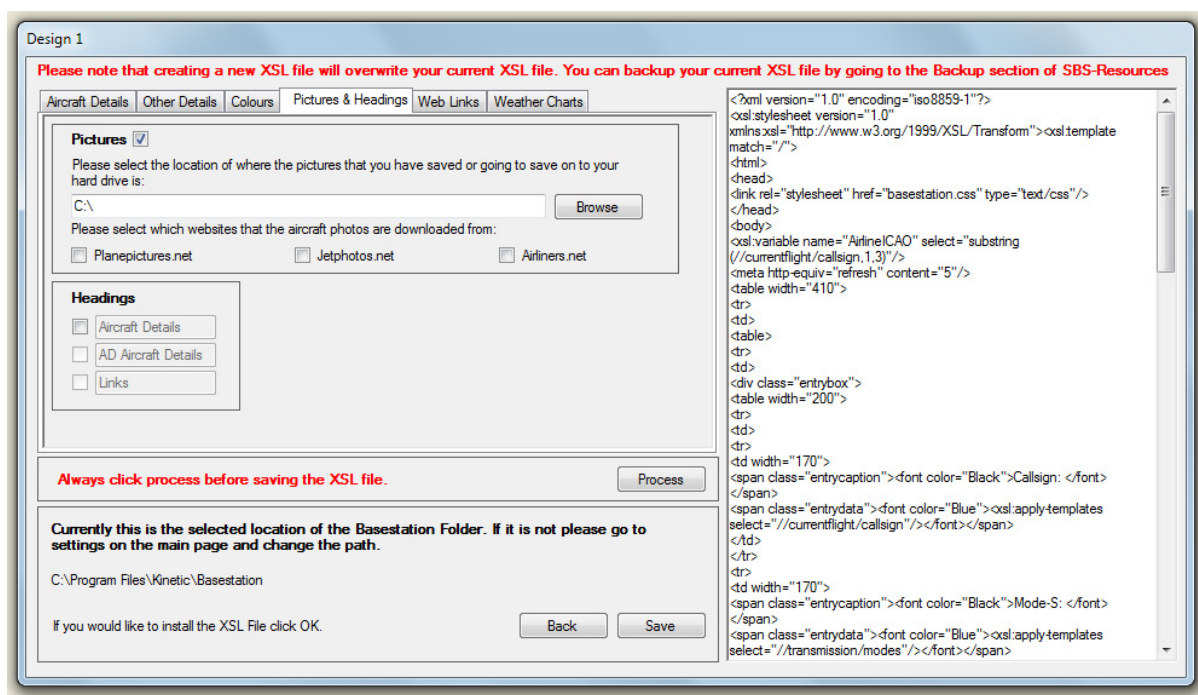


Fig. 31

The Pictures & Headings page (Fig. 31) allows you to point to your collection of aircraft images stored on your hard disk, collected either via, FD, AD or manually.

Point the window to your images and select which option of images you have collected. Once you have made your selection, choose if you want Headings to your options (or change the text), hit process and continue onto Web links....

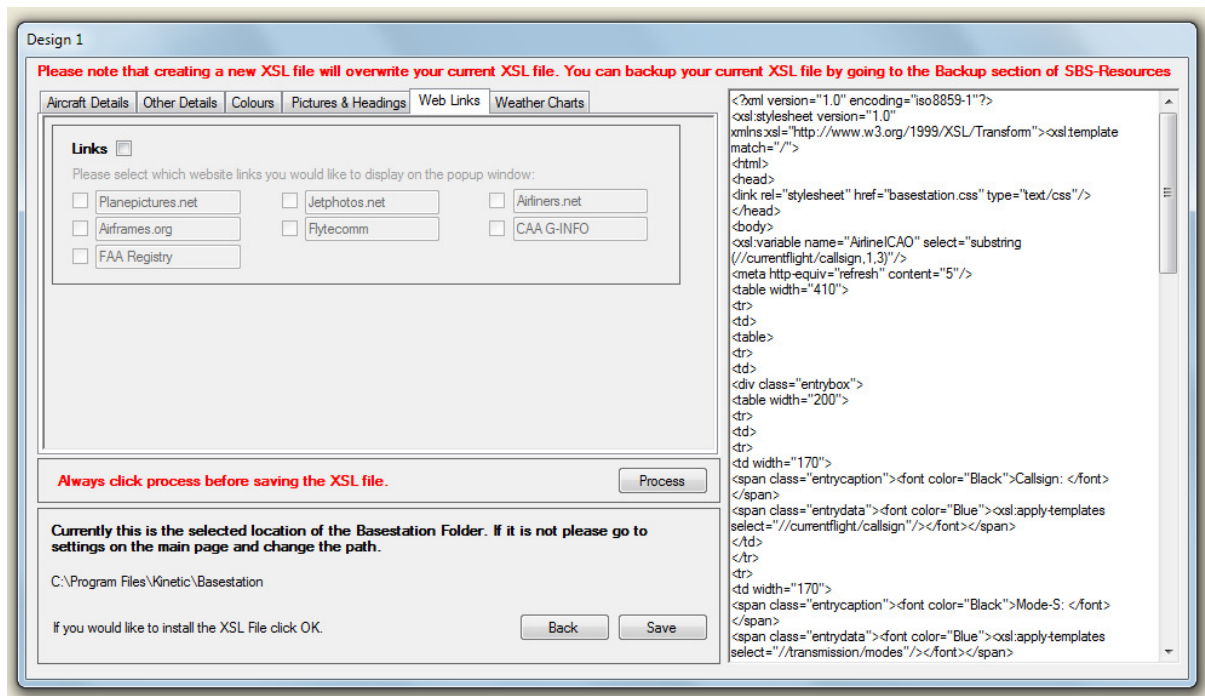


Fig. 32

If you want internet links to frequently lookup websites, choose this option, followed by the look-up options available.

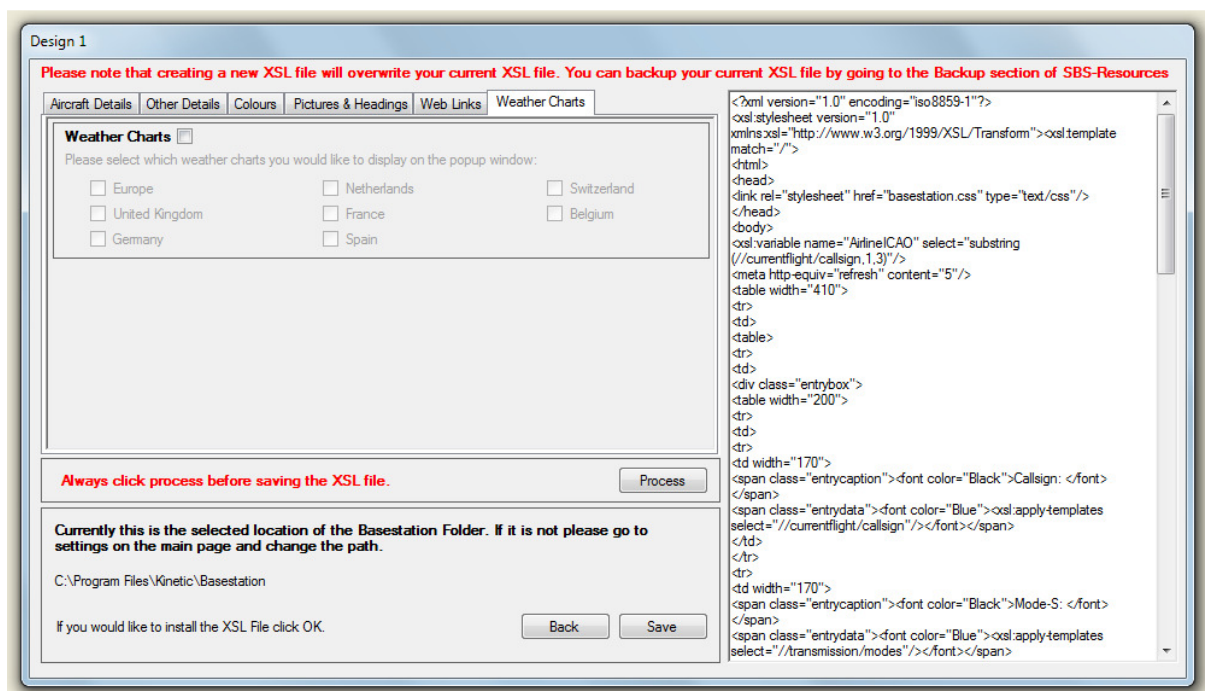


Fig. 33

If you want weather charts, choose this option, followed by the required country to view.

On completion, click the process button, followed by the save button...

Next week move onto the CSS colour editor.....

On selecting the Colours section you will be presented with Fig. 35. The colours section will edit the CSS file and it is recommended that you back your current file (Please got to section 14 on backup files).

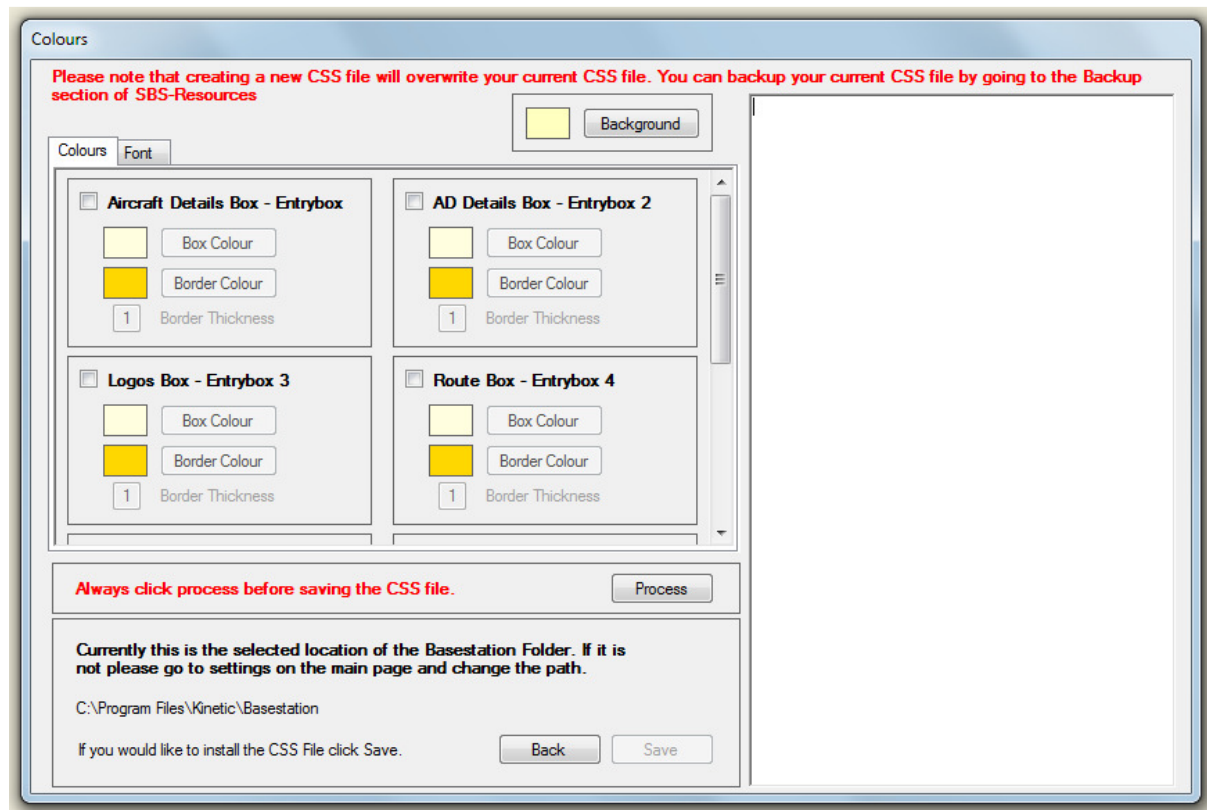


Fig. 34

There are 2 sections to work through (Colours and Font).

Colours allow the user to alter the background colour, create boxes for certain areas of the details window and choose the colours and the border thickness of the boxes.

Shown in Fig. 34 above, there are 6 boxes that can be created in total. Each box has been designed for a specific area (see Fig. 36).

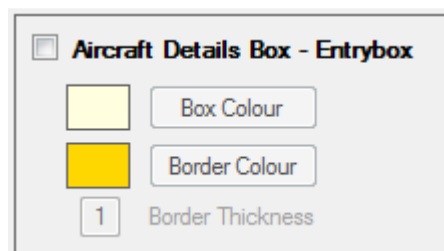


Fig. 35

To enable a box simply select the corresponding tick box which will then allow access to the colours (see Fig. 37).



Fig. 36

To change one of the colours, click the button that is located to the right of the current colour and you will be presented with the colour dialog (see Fig. 37). After a colour has been chosen click 'OK' and the chosen colour will be displayed in the small box.

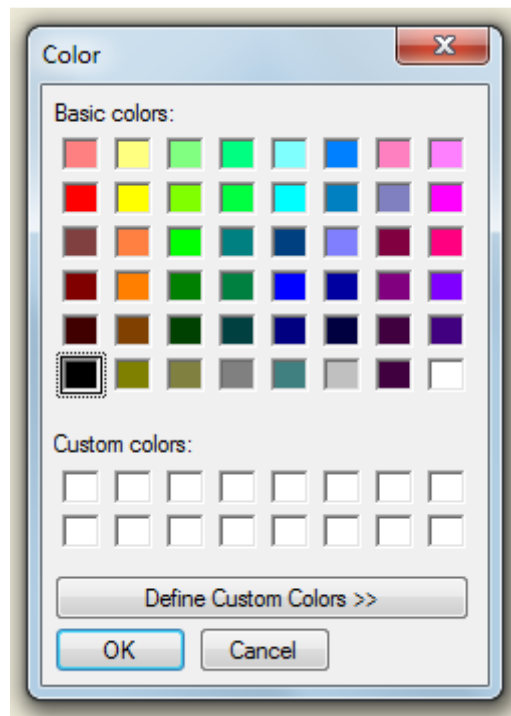


Fig. 37

Font allows the user to change the size, font and font style for any of the text that is displayed in the aircraft window.

To change a font or style just click on the drop down list and select one of the available styles (see Fig. 39).

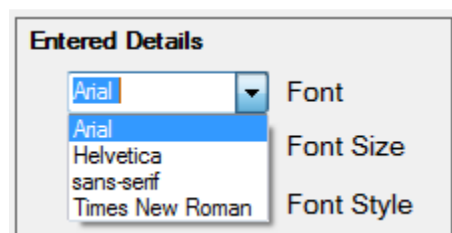


Fig. 38



To change the font size, type in a value in the corresponding text (please note that the values are in percent not font sizes), the default values that are displayed are the default sizes that are used for the default aircraft window.

Colours

Please note that creating a new CSS file will overwrite your current CSS file. You can backup your current CSS file by going to the Backup section of SBS-Resources

Colours Font

**Titles**

Colour

Arial Font

80 % Font Size

Regular Font Style

**Headings**

Arial Font

70 % Font Size

Regular Font Style

**Entered Details**

Arial Font

70 % Font Size

Regular Font Style

Always click process before saving the CSS file.

Process

Currently this is the selected location of the Basestation Folder. If it is not please go to settings on the main page and change the path.

C:\Program Files\Kinetic\Basestation

If you would like to install the CSS File click Save.

Back Save

Fig. 38

Once all the required areas have been selected click the 'Process' button and the coding will appear on the right (see Fig. 40).

Before saving the file make sure that the location that the existing CSS file is located is correct.

If you are sure the path is correct the click save.

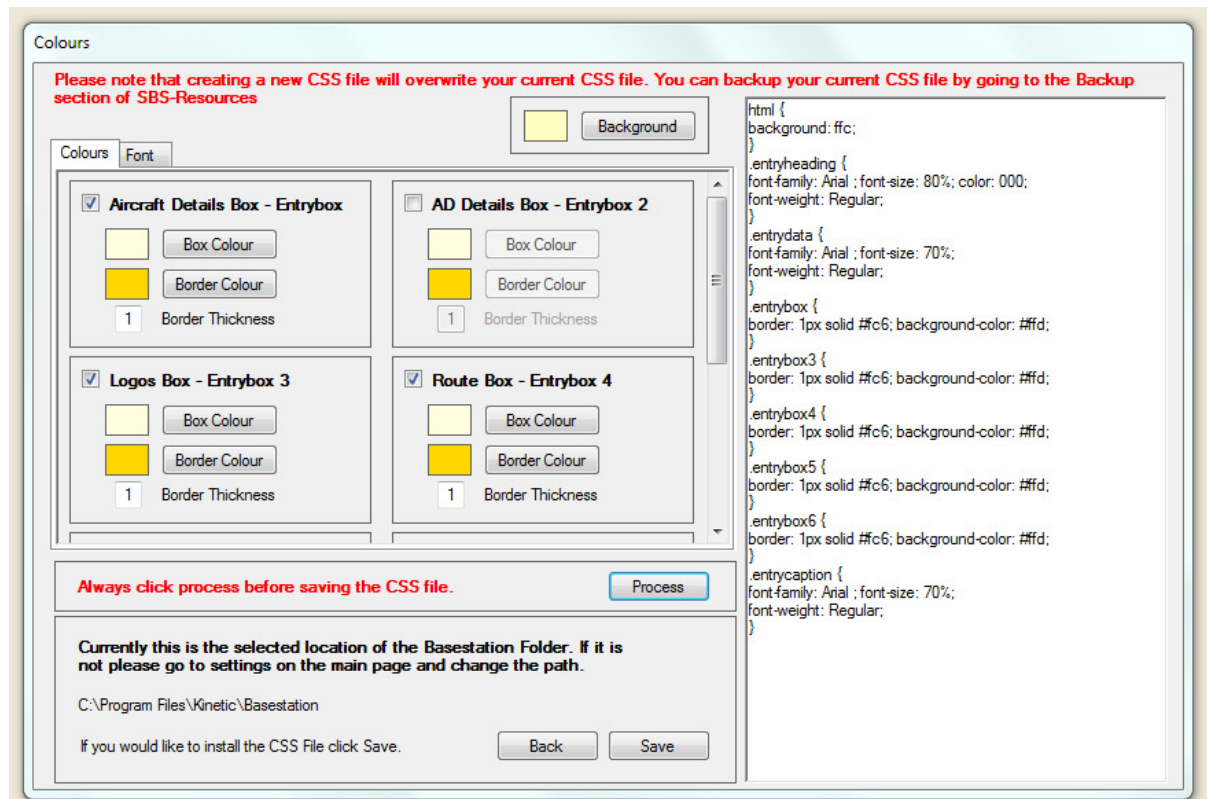


Fig. 40

On completion, your Aircraft Details Window will be transformed.

## 17. Websites

Fig. 41 is the final option in this version of SBS-r. The website links are self explanatory, but if you need further assistance with SBS-r there is a link (SBS-resources Help), which will direct you to the SBS forum, which should be able to answer any further questions you have.



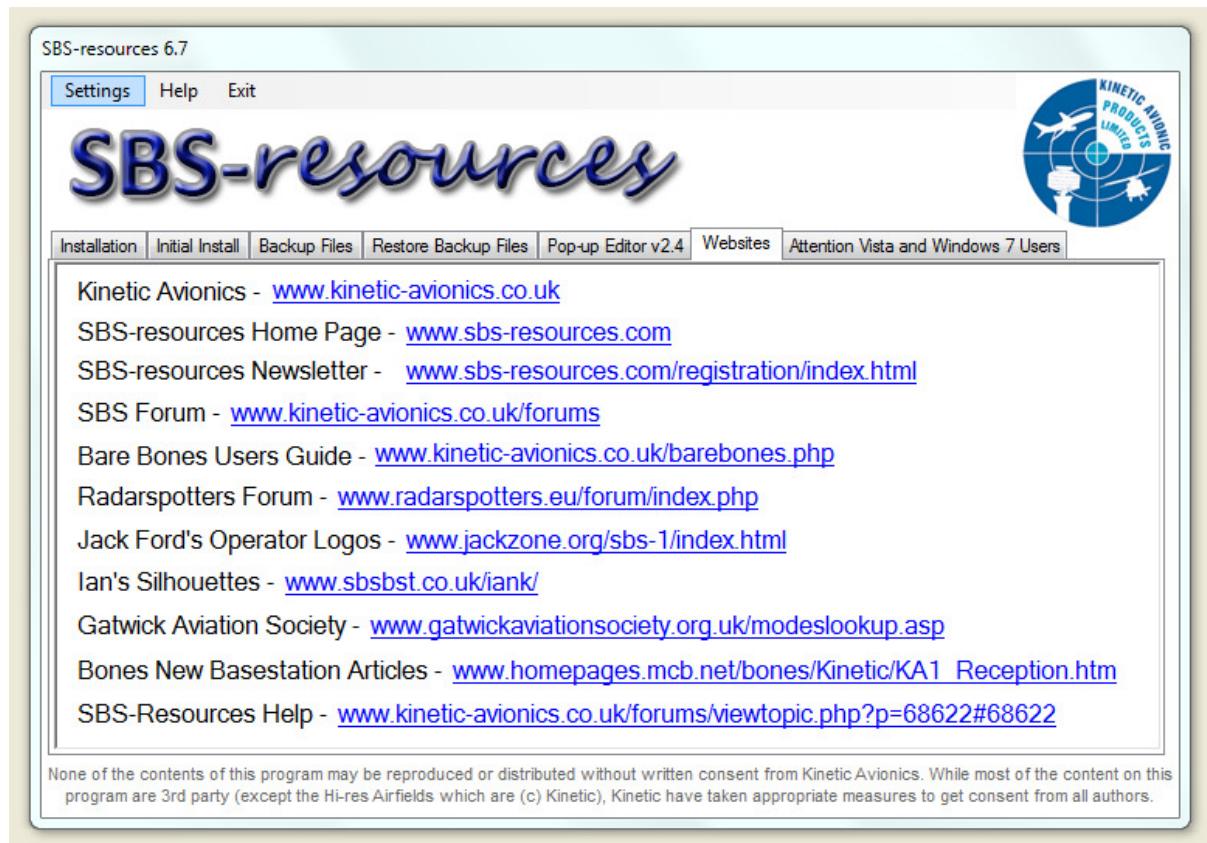


Fig. 41